

# The Crown Jewels

by Rory Perks

1st June 2020

# The Crown Jewels

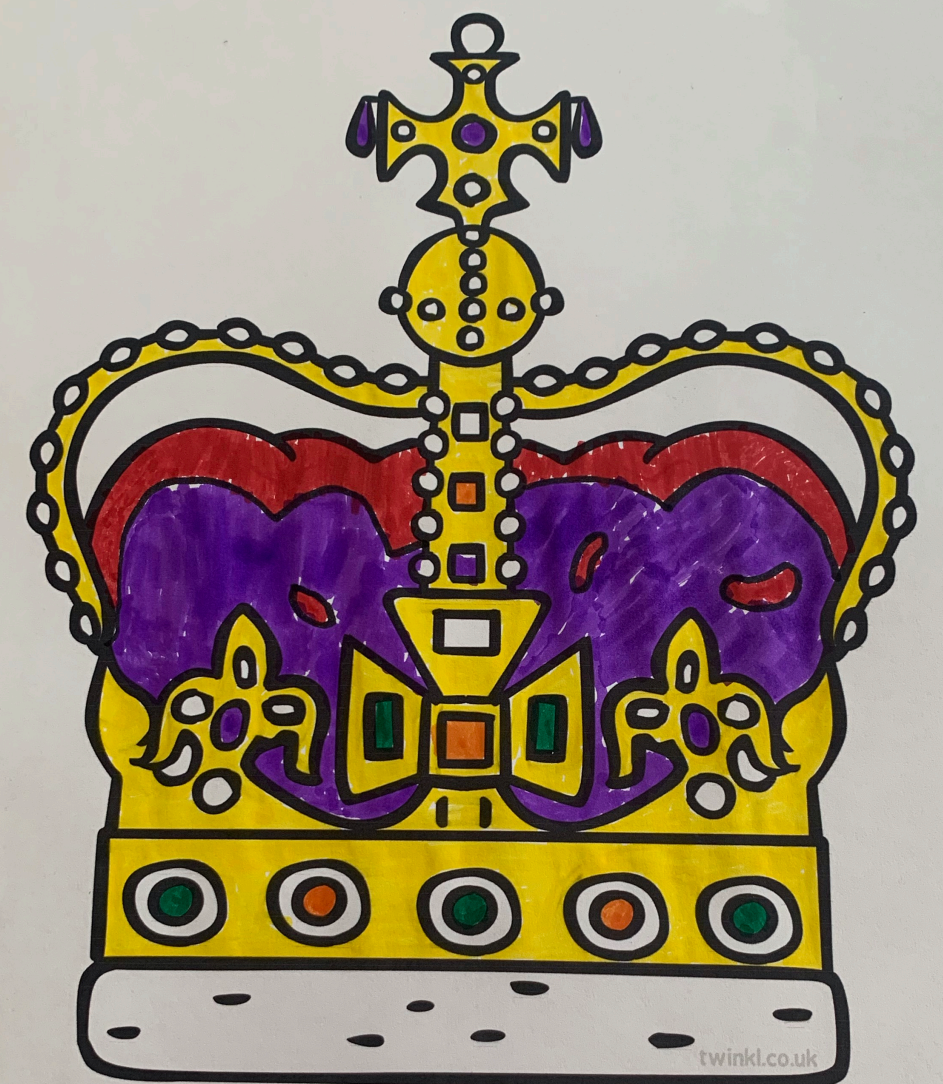
- The Crown Jewels are part of the Royal Collection.
- They are one of the most powerful symbols of the British Monarchy.
- They are kept in the Tower of London.





# Crown

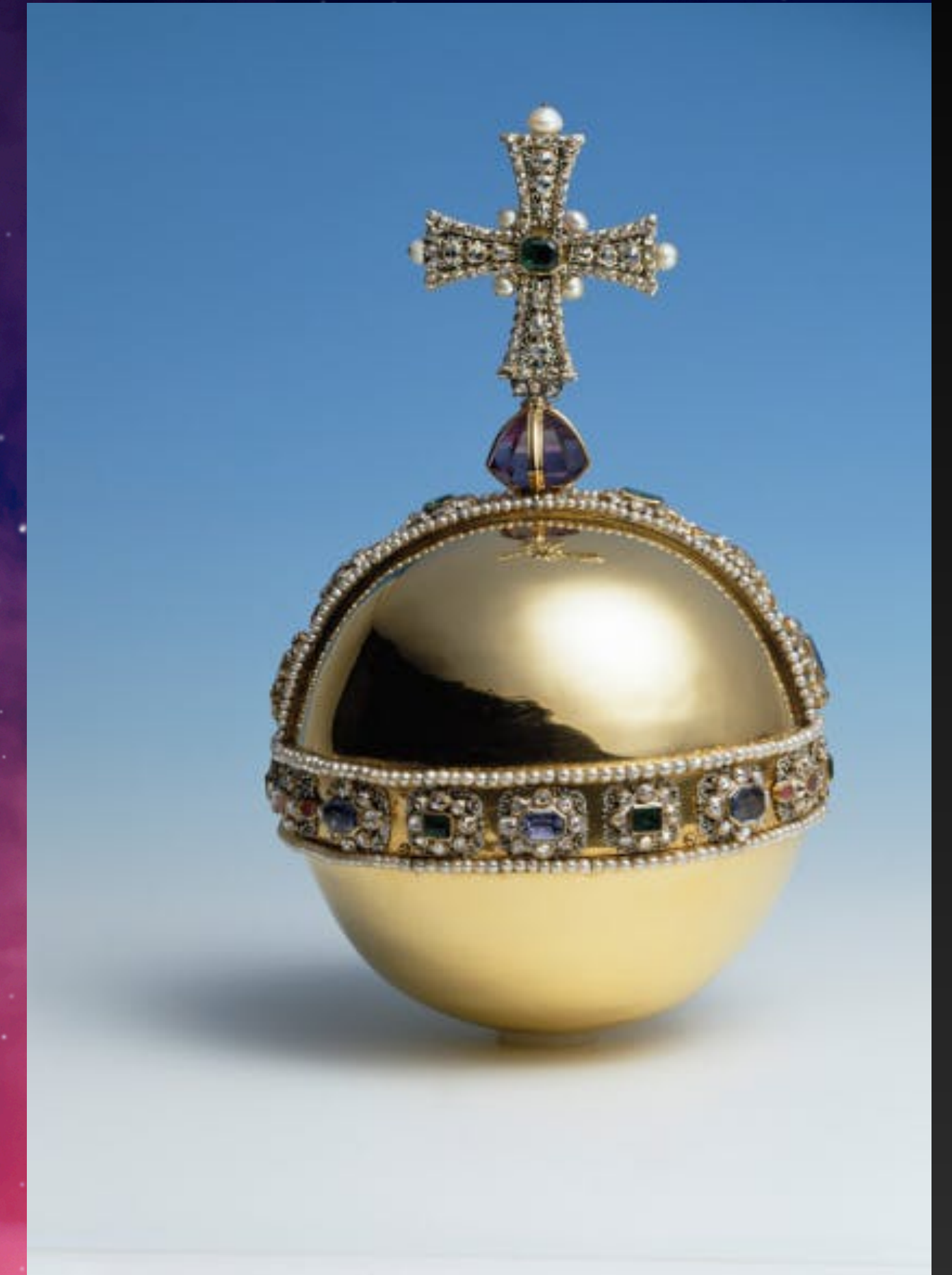
- This is the St Edward's Crown
  - it weighs 2.23kg (the same as our marble pestle and mortar)
  - made for the coronation of Charles II
- Only worn at the time of crowning





# The Orb

- It symbolises the Christian world with its cross mounted on a globe.
- It is placed in the monarch's right hand before being placed on the altar.





# The Sceptre and rod

- The sceptre and rod are held in each hand by the monarch.
- The rod symbolises the monarch's pastoral care for the people
- there is a dove with open wings to symbolise the Holy Spirit.

