

### **WWII German bomb**

In 2017 My dad had to go to London to dispose of a wwII bomb that was found on a building site near Wembley. The bomb was found by workmen using a digger, I bet that they had a shock when they first saw that!

When my dad first arrived he had to check if it was a real bomb and not an old water tank which sometimes happens. He then had to dig it out with a shovel and then had to see if he could find any identifying marks. The bomb still had most of its manufacturer marks and paint which is amazing after being buried for 77 years.

Once he had found out it was live they had to build an igloo around it made of sandbags before they could work on it to protect nearby houses in case it exploded.

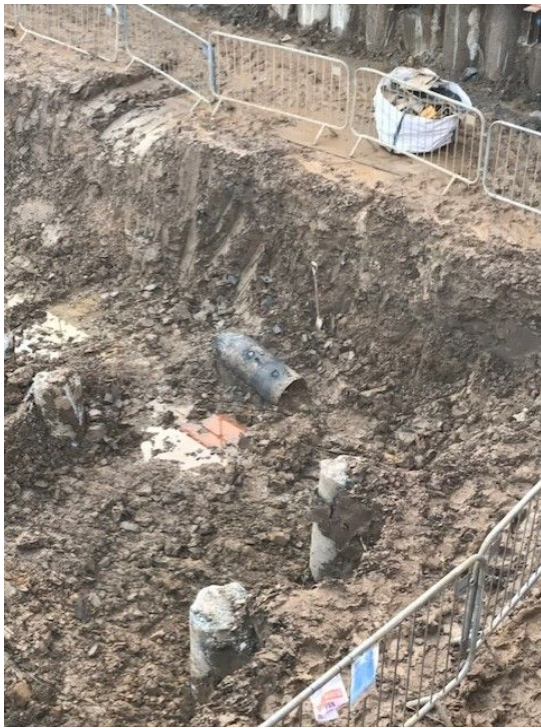
After the sandbags were complete they drilled the fuses and had to pump a kind of salt solution into the bombs to jam the timers so it can't blow up.

Once the bomb was safe to move he had to take it to Southend where the navy blew it up on the beach, but on the way they had to constantly listen to see if the bomb's timers started ticking again.

The techniques my dad used to disarm the bomb were developed in WWII and are still used today.



This was where the digger hit the bomb when it was found.



This is it when it was uncovered.



This was when dad had to check what kind of bomb it was.(it was a high explosive bomb)



This was one of the markings on the bomb, it is the german war office eagle.





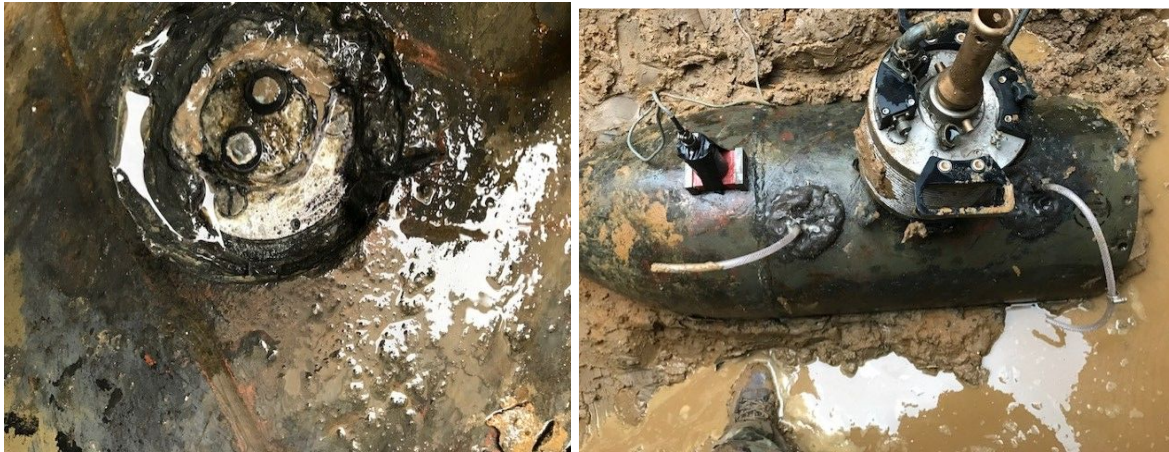
This was the other marking, it is the year it was made(1938).



This is the mic they used to make sure it didn't start ticking.



These are the sandbags they used to make the sang igloo.



On the left was 1 of the fuzes with a hole drilled in it on the right you can see the pipes used to pump the salt solution.



This is the bomb strapped on top of the truck



This is the navy blowing the bomb up on a beach.