

# Holiday Activity And Food Programme

#HAF2021

## What?

The Holiday Activity and Food Programme (HAF), funded by DfE, is returning this December for children aged 5-16 years eligible for free school meals.

## When?

The programme will be running for 4 days from:  
**20th - 23rd December.**

## How?

You will be able to sign up to our Children Activities Booking Site (CABS) from November.

Activities will be available to book from **1 December.**

## What is available?

We will be offering a variety of face-to-face activities with your local providers:

- ✓ exciting **activity packs** for all ages
- ✓ an opportunity to claim your own **winter food hamper** to enjoy over the holidays
- ✓ **tickets to local events** and more!

To find out more and stay up to date, you can follow us on social media @GlosCC or visit [www.gloucestershire.gov.uk/haf](http://www.gloucestershire.gov.uk/haf)



To stay up to date on all things HAF, email us at:

[HAFParentEnquiries@gloucestershire.gov.uk](mailto:HAFParentEnquiries@gloucestershire.gov.uk)

to join our newsletter where we will have updates, insights, recipes and crafts from November.



**Gloucestershire**  
COUNTY COUNCIL



**Department  
for Education**

# Holiday Activity Programme

## What?

Using grant funding, this year we are extending our holiday activity programme for December to all children in Gloucestershire.

Open to children of any age, this makes sure all children can access holiday activities locally.

## When?

The HAP programme will be running for 4 days from **20th -23rd December**.

## How?

You will be able to sign up to our Children Activities Booking Site (CABS) from November.

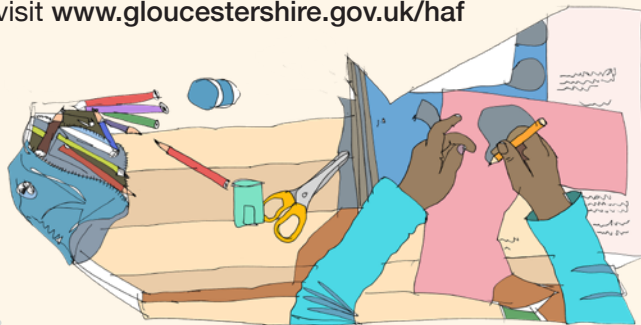
Activities will be available to book from **1 December**. You will be able to book any activities marked HAP in the title.

## What will be available?

- ✓ **Face to face activities** for children to socialise and play
- ✓ **Ticketed activity schemes** to your favourite venues
- ✓ **A large online video activity library** and more!
- ✓ **A potential free meal** at your local activities (Please contact providers directly for more details on this).

To find out more and stay up to date, you can follow us on social media @GlosCC

or visit [www.gloucestershire.gov.uk/haf](http://www.gloucestershire.gov.uk/haf)



**Gloucestershire**  
COUNTY COUNCIL